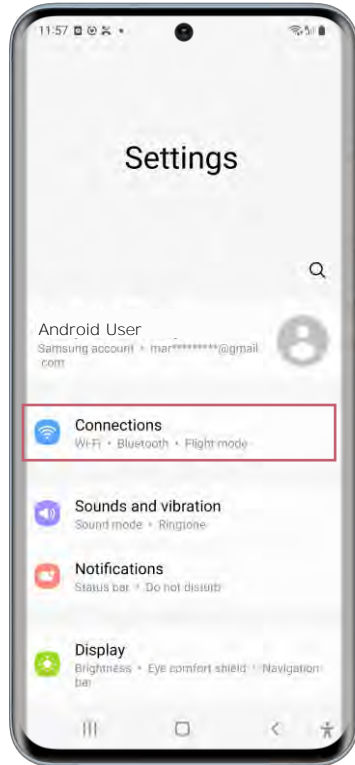


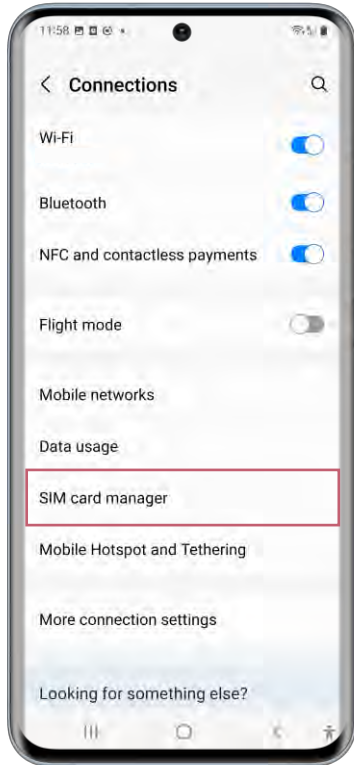
A woman wearing a light-colored t-shirt, dark shorts, a tan hat, and a large backpack is sitting on a rocky ledge. She is holding a smartphone in her right hand and looking out over a vast, blue ocean. In the distance, a large, isolated rock formation is visible in the water. The background shows a hazy, mountainous landscape under a bright sky. A semi-transparent teal banner is overlaid across the middle of the image, containing the title and date.

eSIM Activation Guide - Android

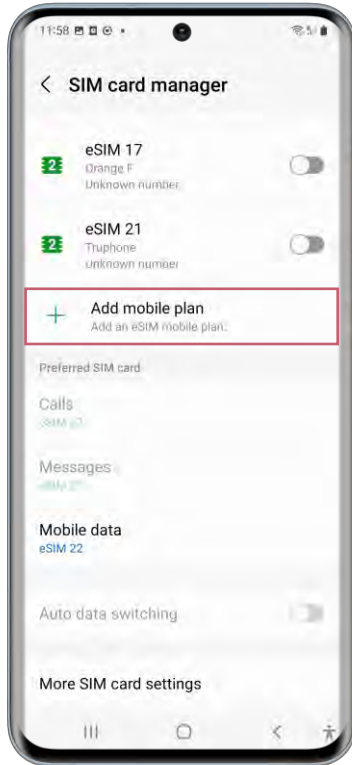
May 2023



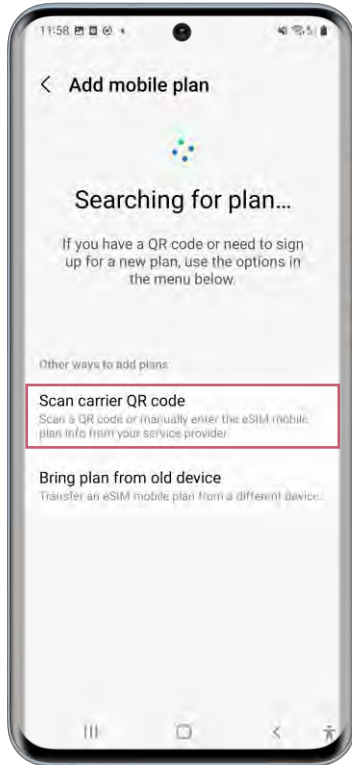
In the settings on your device, select “Connections”.



Once you have done this, select “SIM Card Manager”.



Next select "Add Mobile Plan".



The device will begin to search for available plans.

You can choose "Scan Carrier QR Code".



The device camera will then open up on screen. Use the camera to scan the QR code.

If for any reason you are unable to scan the QR Code, you can select **“Enter Activation Code”** to input the Manual Activation Code.

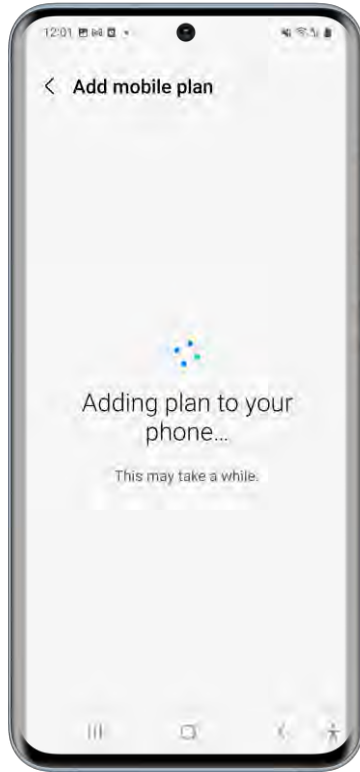
The rest of the journey is the same for both QR Code and Manual Code activations.



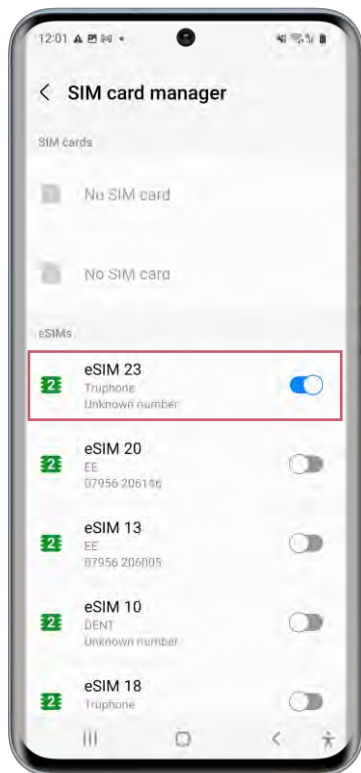
The device will register the QR code once it is in the camera frame.



Click "Confirm" to activate and install the eSIM to the device.



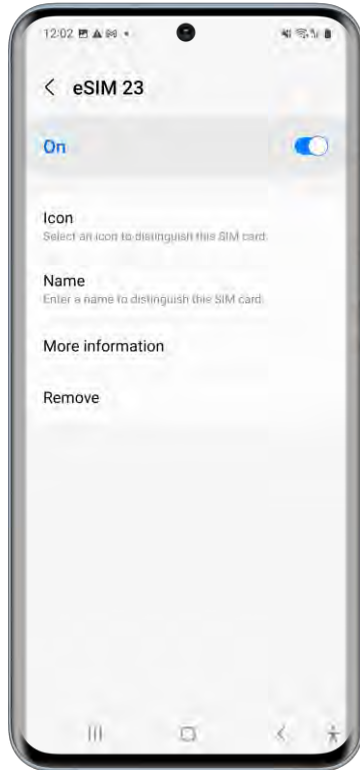
The eSIM will then begin to activate and install.
This can take a few minutes.



Once set up is complete, you will be brought **back to the "SIM Card Manager" screen to see** which of your SIMs are active and inactive.

The newly activated eSIM will be at the top of the eSIM plan list and will be set to active/switched on.

From here you can click on your active eSIM to see more details about it.



In this screen you can select an icon to make your eSIM more identifiable in the list of eSIMs on your device, rename your new eSIM, find out further information and remove the eSIM from your device.